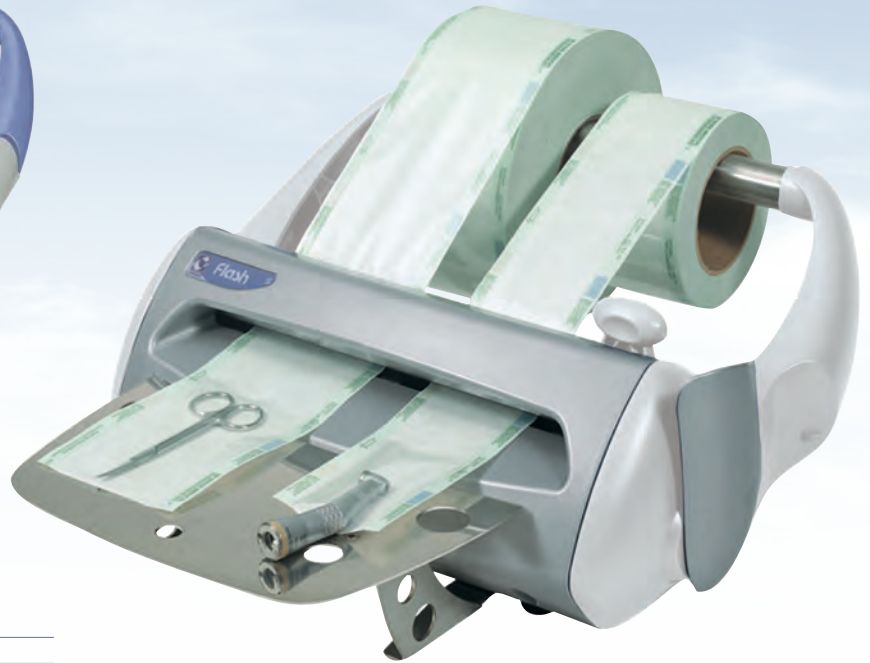


FLASH thermosealer



FLASH

	U.M.	
Packet tray		optional
Overall dimensions W x H x D	mm	445 x 220 x 330
Electrical voltage and frequency	V - Hz	230 - 50 (single - phase AC)
Absorbed maximum power	W	100
Seal width	mm	10
Seal length	mm	250
Seal duration	s	3
Weight (mass)	kg	5,2

Technical data are subject to change without notice

FLASH is the right sealer to carry out the tools wrapping procedures. It allows a **fast** and **practical sealing** thanks to its **great handiness**. It is equipped with a bracket, which enables the wall installation.

The practical stainless steel support is an option.